

Work smart. Work secure. Work fast.

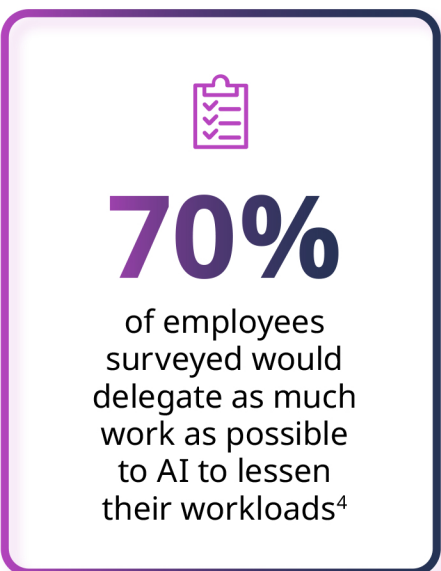
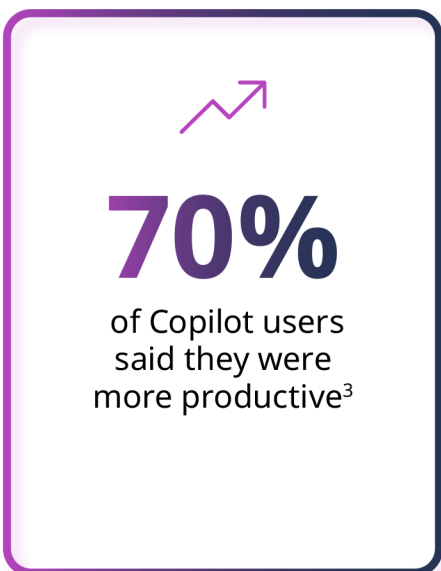
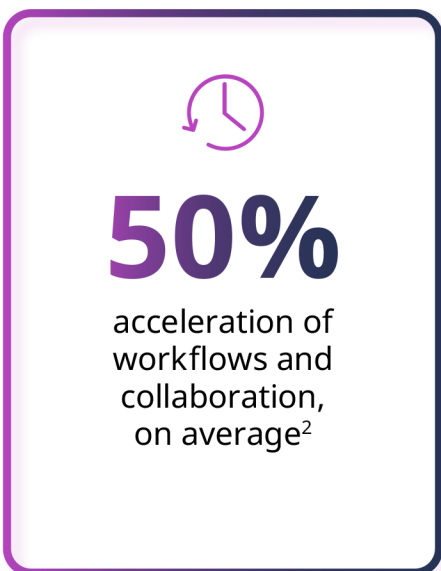
# WorkMagic

with Windows 11 Pro devices and Microsoft 365<sup>1</sup>



## Unleash employee productivity

Advancements made in Windows 11 Pro devices and Microsoft 365's AI capabilities allow you to increase your employees' productivity with intelligent assistance for tasks such as email writing, presentation creation, and project management.

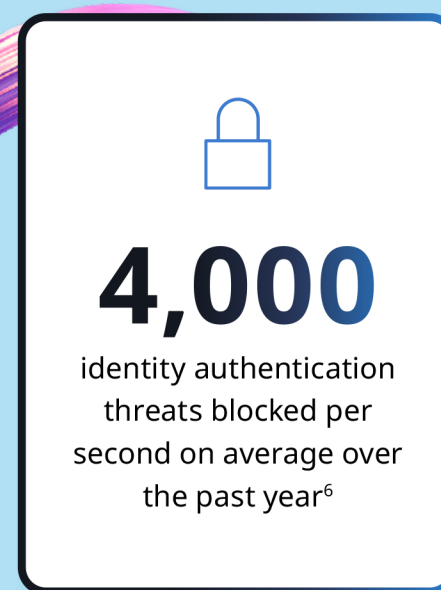


“ I would highly recommend Windows 11 Pro to other businesses as it offers advanced features, improved productivity, enhanced security and easy compatibility with all types of applications. ”

—Damien Ponweera Director of Finance, Techspace, UK

## Industry-leading security

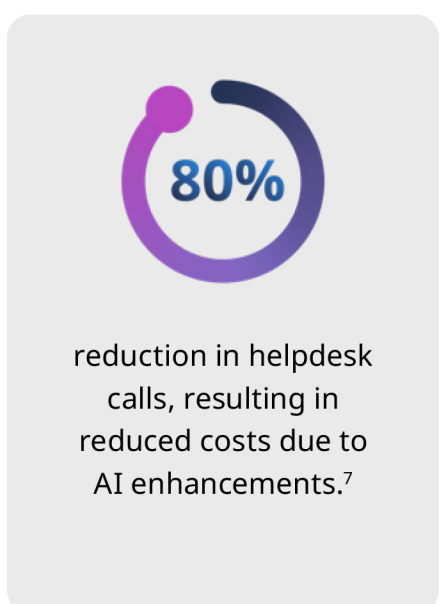
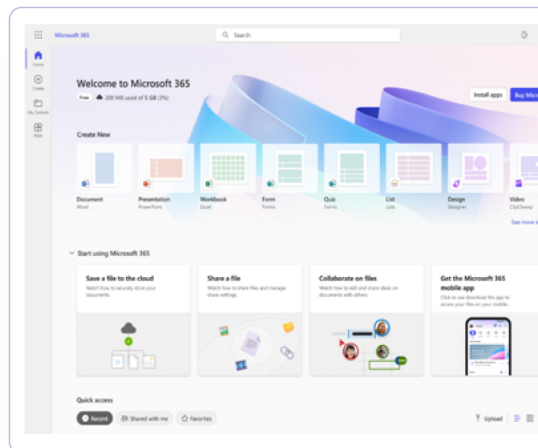
With security already enabled, Windows 11 Pro devices with Microsoft 365 provide end-to-end security management. Protecting your devices, Windows 11 Pro's built-in automated security tools include Windows Hello, BitLocker, and Windows Defender. Microsoft 365 extends your protection with cloud-based security features such as identity and access management, threat protection, information protection, and security management.



## Elevated business efficiency

With Windows 11 Pro devices and Microsoft 365, you can reduce costs, help alleviate IT team's burdens, simplify work needed to address licensing complexity with cloud-based solutions, and streamline admin and billing tasks all in one place.

As Windows 10 end-of-service approaches in the next year, you can take advantage of planning early and reap the business benefits of upgrading to Windows 11 Pro devices and a Microsoft 365 license. Faster updates, easier deployment, and the latest updates to Office apps are just a few of the ways you can Work Magic and simplify your business transformation.



Learn more about how upgrading to Windows 11 Pro devices with Microsoft 365 can increase your employee's productivity, provide modern security management, and elevate your organization's efficiency.



Scan to learn more

1. Sold separately.  
 2. Compared to Windows 10 devices. [Improve your day-to-day experience with Windows 11 Pro laptops](#), Principled Technologies, February 2023.  
 3. Work Trend Index Special Report, [What Can Copilot's Earliest Users Teach Us About Generative AI at Work?](#), November 2023.  
 4. Work Trend Index Annual Report, [Will AI Fix Work?](#), May 2023  
 5. Windows 11 Survey Report, Techaisle, February 2022. Windows 11 results are in comparison with Windows 10 devices.  
 6. Microsoft Digital Defense Report 2023, Telemetry sources: Microsoft Defender for Endpoint, Microsoft Defender for Cloud Apps, Microsoft Defender for Identity, Microsoft Defender for Office 365, Microsoft Entra ID (formerly Azure AD), Microsoft Defender Threat Intelligence.  
 7. Commissioned study delivered by Forrester Consulting "The Total Economic Impact™ of Windows 11 Pro Devices", December 2022. Note, quantified benefits reflect results over three years combined into a single composite organization that generates \$1 billion in annual revenue, has 2,000 employees, refreshes hardware on a four-year cycle, and migrates the entirety of its workforce to Windows 11 devices.  
 8. SMB Windows 11 Survey Report. Techaisle, February 2022.  
 9. App Assure program data.

**Header Image Disclaimer**  
 Screen simulated, subject to change. Copilot in Windows (in preview) is available in select global markets and will be rolled out to additional markets over time. [Learn more](#). Copilot with commercial data protection is available at an additional cost for users with an Entra ID with an enabled, [eligible Microsoft 365 license](#).